

JAZZY

DRESZY

JAZZY



THIS CATALOGUE IS DIVIDED INTO 7 ACTS, IN WHICH
THE PRODUCT IS MIXED WITH THE SPACES IN ORDER TO
PROVIDE DIFFERENT EMOTIONS



TIME FOR A NEW CONCERT

We perform the creation of the spaces as a musical composition. Each environment is an Act, so we understand the variety of emotions leading us to enjoy the combination of product and space.

JAZZY



DESIGNER · SERGIO ROCHAS

Joplin Parker Simone Miles

Sergio Rochas has been inspired by the first and second half of the 20th century to design this series of Tables and Sideboards, which take us to that time where Art Déco and Jazz mirrored a particular way of seeing the lifestyle of a society. With its prevailing straight lines evocative of a clear and rationalist visual system added to the search for concepts based on Jazz music artists; they make the whole movement a clear tribute to that heterogeneous and hedonistic era.

JOPLIN honours the pianist Scott Joplin, forefather and promoter of Jazz music, its main significant characteristic is the metal legs composed of aluminium plates romantically evoking the keys of a piano. To this, one could add the variety of shapes of Ceramic and Marble Tops.

PARKER is inspired by the matchless way of playing the Sax of Charlie Parker. Joplin's metal leg is reinterpreted but with an interior metal sheet hinting at the morphology of the saxophone. The great combination of finishes makes it the most versatile piece in the series.

SIMONE introduces us to the great lady of Jazz music, Nina Simone. In this program, the coffee tables subtly mixes a series of elements giving rise to a visual composition close to Nina's music, elegant and with great improvisational nuances.

MILES complete these collections, in which by remembering the great Miles Davis whom Jazz music reaches its broadest peak and social positioning, a Sideboards collection with a wide range of customization possibilities are born. As if it were domesticated cubism, geometric elements merge with Dressy's multiple finishes and a metal base that supports the composition, making it a timeless collection with multiple resources.

JAZZY



Nubo Lap

DESIGNER · SANTIAGO SEVILLANO

NUBO, designed by Santiago Sevillano, it is the new seats collection for Dressy, the result of a careful craftsmanship that continues to find new expressions. It is conceived as an elegant piece of refined architecture where each material fulfils its function with rigor and elegance. One of its main significant characteristics is the meeting of the parts of the backrest, which gives volume to the piece as if it were three merged clouds. Nubo contributes to creating an exceptionally private refuge where you can relax, enveloping you immediately in its comfortable embrace. The collection includes Chairs with high and low backs, an Armchair and a Bench with and without backrest, giving versatility to the set. The light and stable support structures are inspired by the accuracy of the goldsmith's art, obtaining three different types of legs.

LAP, now converted into an iconic piece of Dressy, it is characterized by its versatile shell giving a large number of possibilities. Being able to choose between a fully upholstered shell and removable seat or lacquered shell and removable upholstery. This together with its wide range of supports, including a central metal leg fixed or swivel, make Lap one of the most versatile pieces of the brand.

PROGRAM

10-15

Act. 1

Table·JOPLIN / Chairs·NUBO

16-21

Act. 2

Table·PARKER / Chairs·GALERA / Sideboard·MILES

22-31

Act. 3

Table·JOPLIN / Chairs·NUBO / Sideboard·MILES / Coffee Table·SIMONE

32-41

Act. 4

Table·PARKER / Chairs·NUBO / Sideboard·MILES

42-49

Act. 5

Table·JOPLIN / Chairs·LAP / Sideboard·MILES / Coffee Table·SIMONE

50-55

Act. 6

Table·PARKER / Chairs·LAP

57-63

Annex

Technical Details / Product - Photography



Act. 1

PERFORMERS

Table · JOPLIN
Chairs · NUBO

Joplin and Nubo interpret an environment with rational notes and an autumnal key, leading us to a melody of complementary colours outlined with the black colour as a connecting element.

JAZZY





JAZZY





Act. 2

PERFORMERS

Table · PARKER
Chairs · GALERA
Sideboard · MILES

Parker, Galera and Miles take us to a hedonistic world. Sharing the same stage, they maintain the rhythmic style of a good composition supported by the geometry of the scene.

JAZZY





JAZZY







Act. 3

PERFORMERS

Table · JOPLIN
Chairs · NUBO
Sideboard · MILES
Coffee Table · SIMONE

This time the score to follow focuses on the subtlety and the freshness of the interpretation of soft tones. Accentuating them with floral motifs and diffused light, that encompasses the scene of a contained beauty.

JAZZY



TIME FOR A NEW CONCERT



JAZZY









JAZZY







Act. 4

PERFORMERS

Table · PARKER
Chairs · NUBO
Sideboard · MILES

This environment is clearly a composition where the methodical and virtuous interpretation of the performers, who coordinate themselves, lead to a clear and sensual staging.



TIME FOR A NEW CONCERT





JAZZY





JAZZY

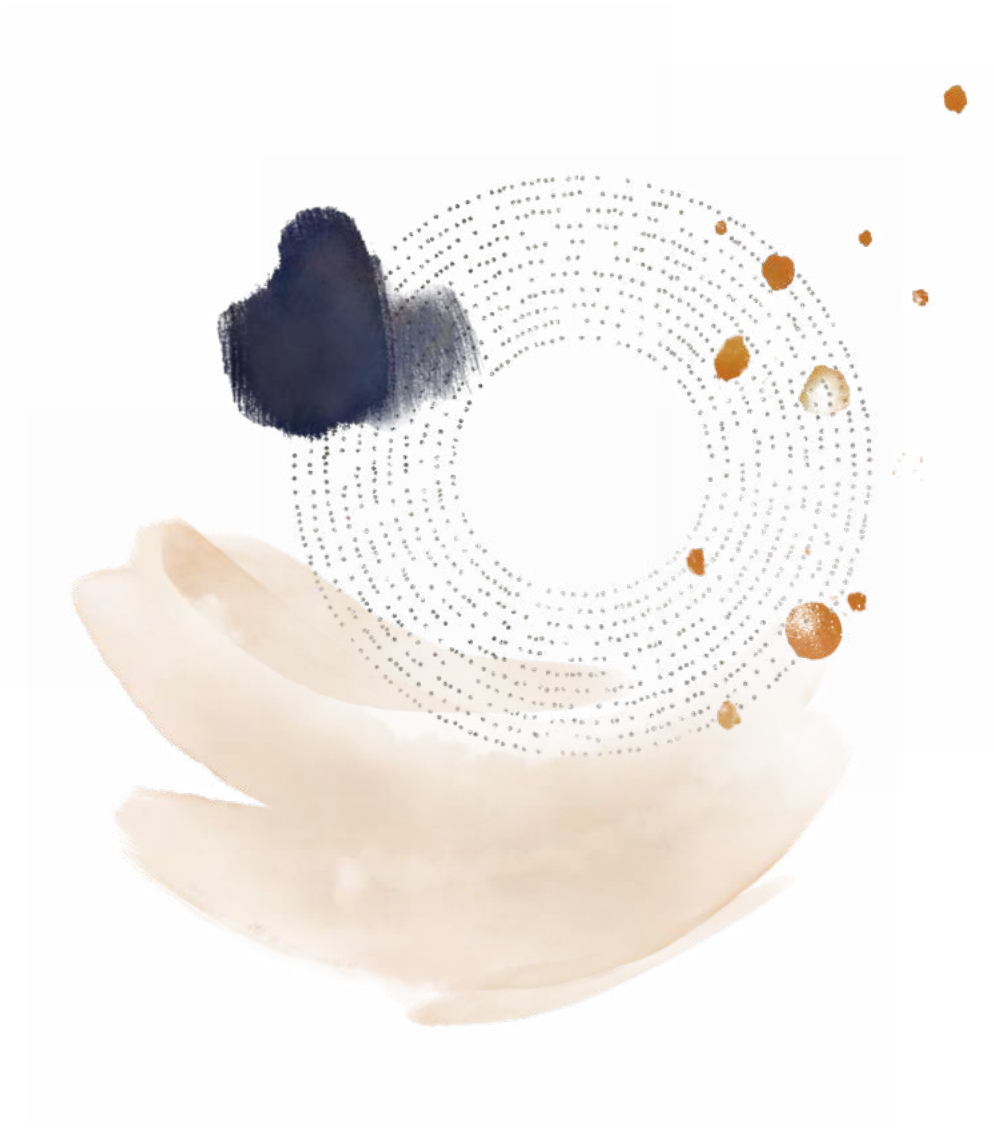


TIME FOR A NEW CONCERT

JAZZY







Act. 5

PERFORMERS

Table · JOPLIN
Chairs · LAP
Sideboard · MILES
Coffee Table · SIMONE

Joplin, Lap, Miles and Simone perfectly perform a room quartet but as you would expect, they are open to improvisation with a special guest who gives dreamlike notes to the ensemble.



TIME FOR A NEW CONCERT





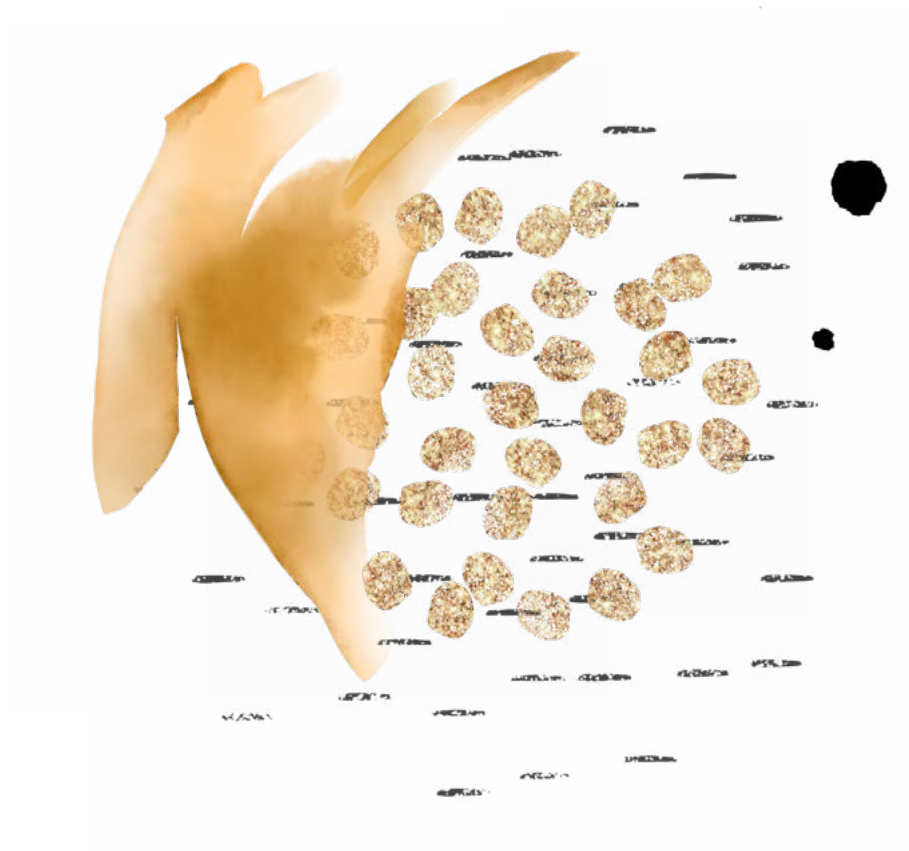
DRESSY



JAZZY







Act. 6

PERFORMERS

Table · PARKER
Chairs · LAP

"Sunrise at night" is the title of this composition, where Lap takes the leading role and Parker subtly accompanies her to create a perfect harmony.

JAZZY









Annex

TECHNICAL DETAILS
PRODUCT · PHOTOGRAPHY

TABLE

PARKER: Designed by Sergio Rochas

Parker offers four different shapes for its ceramic top, which rest on two legs of innovative design. In this case, it was the saxophone of Charlie Parker that reminds the movement that evokes the design of the frame. In addition, Parker's legs can be painted in all 30 colours offered by Dressy, and is also available in one of the new colours such as gold, bronze or brass among others.

H75 cm



REF. 5048



REF. 5047



REF. 5046



REF. 5045



TABLE

JOPLIN: Designed by Sergio Rochas

Joplin offers four different shapes for its ceramic top, which rest two legs of innovative design. The legs are precisely the element that differentiates the Joplin and Parker tables. Scott Joplin, who was one of the most influential pianists in the beginnings of Jazz, has inspired the design of a leg that reminds the keys of a piano.

H75 cm



REF. 5053



REF. 5052



REF. 5051



REF. 5050



* See the different product possibilities in the Technical — Commercial Pricelist.

SIDEBOARD

MILES: Designed by Sergio Rochas

Miles is Dressy's first bet in storage furniture. It is available in multiple sizes and configurations, which can be combined with lacquered units or with units covered in ceramic. The Sideboard stands on a careful metal structure that is offered in two heights and two different shapes (round and rectangular).

H60 cm



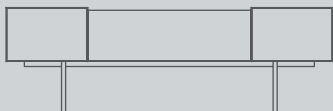
REF. 102000

REF. 102100

REF. 102001

REF. 102101

H77 cm



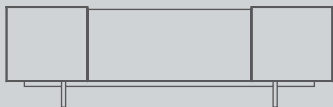
REF. 102010

REF. 102110

REF. 102011

REF. 102111

H73 cm



REF. 102500

REF. 102600

REF. 102501

REF. 102601

H90 cm



REF. 102510

REF. 102610

REF. 102511

REF. 102611

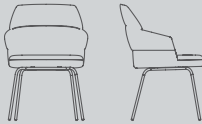
* See the different product possibilities in the Technical — Commercial Pricelist.

CHAIR

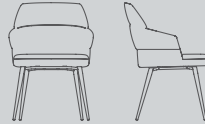
NUBO: Designed by Santiago Sevillano

Nubo designed by Santiago Sevillano, it is the new seats collection for Dressy, the result of a careful craftsmanship that continues to find new expressions. One of its main significant characteristics is the meeting of the parts of the backrest, which gives volume to the piece as if it were three merged clouds. It is available in three types of legs, giving the collection great versatility when configuring the product.

H86 cm



REF. 4100



REF. 4101



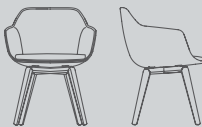
REF. 4102 - 4103 - 4104

CHAIR

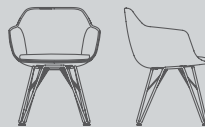
LAP: Designed by Santiago Sevillano

Lap is a collection of 4 armchairs designed by Santiago Sevillano. Two types of legs (solid ash wood or metal) and two types of seating options (lacquered or upholstered shell) together with the variety of finishes offer multiple options to create that unique piece that fits perfectly in each environment. A fixed or rotating option with or without automatic return is also available.

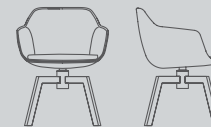
H81 cm



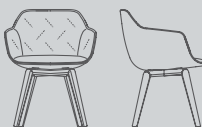
REF. 4011



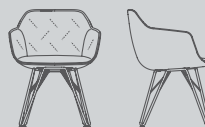
REF. 4051



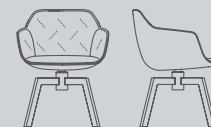
REF. 4053 - 4057 - 4055



REF. 4012



REF. 4052



REF. 4054 - 4058 - 4056

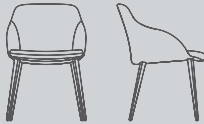
* See the different product possibilities in the Technical — Commercial Pricelist.

CHAIR

GALERA: Designed by Dressy Studio

Galera chair from Dressy collection is a piece with a fully upholstered shell and removable cushion available in a wide range of upholstery such as leather, velvet or synthetic fabrics, among others. This shell has been designed with rounded and pleasant shapes to ensure a good seating comfort. Its metallic legs, with a conical section, can be painted in the 30 colours from our metal catalogue.

H82 cm



REF. 4080

COFFEE TABLE

SIMONE: Designed by Sergio Rochas

Simone gives its name to the ceramic coffee table. One of the main characteristics of Nina Simone was the improvisation she applied to her compositions. This table can also be considered as a composition that each one can improvise thanks to the wide variety of finishes and the different accessories that can be added: metal magazine and wooden tray.

H43 cm



REF. 6010

* See the different product possibilities in the Technical — Commercial Pricelist.

ACT. 1 | Pp. 10-11

REF. 5051 / 250x125x75 cm

JOPLIN Table
EP 2471F · LC 7011

REF. 4100

NUBO Chair
EP 2471F · GH 701

ACT. 2 | Pp. 16-17

REF. 5046 / 250x125x75 cm

PARKER Table
EP 2471F · EP 7671B · LC 7008

REF. 102110

MILES Sideboard
EP 2471F · LC 7008 · LX 7671

REF. 4080

GALERA Chair
EP 2471F · GH 405

ACT. 3 | Pp. 22-23

REF. 5050 / 250x125x75 cm

JOPLIN Table
EP 491F · LC 7012

REF. 6010 / 140x70x43 cm

SIMONE Coffee Table
EP 491F · LC 7012

REF. 102600

MILES Sideboard
EP 491F · LC 7012 · LX 1004

REF. 4104

NUBO Chair
EP 491F · CIT 080

REF. 7001

SIMONE Tray
RO 559

ACT. 4 | Pp. 32-33

REF. 5047 / 300x125x75 cm

PARKER Table
EP 2493F · BM 3005 · HCC 825

REF. 102100

MILES Sideboard
EP 2493F · HCC 825 · W 2460

REF. 4101

NUBO Chair
EP 2493F · LT 57

ACT.5 | Pp. 42-43

REF. 5053 / Ø150 cm
JOPLIN Table
EP 2407F · LC 7010

REF. 6010 / 120x60x43 cm
SIMONE Coffee Table
EP 2407F · LC 7010

REF. 102011
MILES Sideboard
EP 2407F · LX 1004

REF. 4058
LAP Chair
EP 2407F · LT 54 · LX 1004

REF. 7002
SIMONE Tray
EP 2407F

REF. 7001
SIMONE Tray
RO 550

ACT. 6 | Pp. 50-51

REF. 5046 / 250x125x75 cm
PARKER Table
EP 2407F · BM 3006 · Marble Emperador

REF. 4051
LAP Chair
EP 2407F · GH 301

Concept & Graphic Design
Sergio Rochas

Orchestra Director
Sergio Rochas

Photography
angelsegurafoto

Product Design
Santiago Sevillano (Nubo and Lap Collections)
Sergio Rochas (Joplin, Parker, Simone and Miles Collections)
Dressy Studio (Galera Collection)

DRESSY

Ctra. N340, Km. 704,4
03330 Crevillente - Spain
T. 0034 965 407 005
F. 0034 965 406 503
mail: info@dressy.design

web: dressy.design



TIME FOR A NEW CONCERT

EN

w. dressy.design